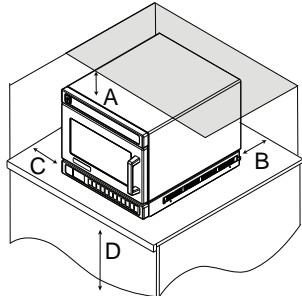
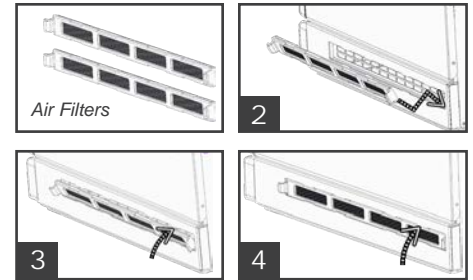


AIR FILTER INSTALLATION

Oven ships with two (2) Air Filters taped to the floor of the oven interior.

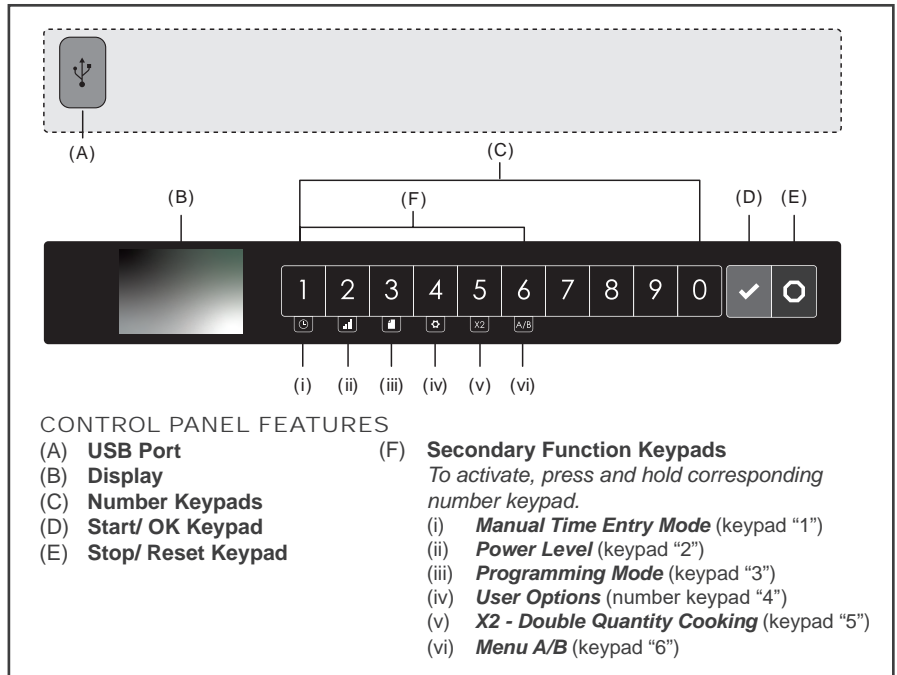
⚠ Do NOT operate oven without the air filters installed.

1. Remove and discard tape.
2. Locate air filter in the recessed grills along the base of the left and right sides of the oven.
3. Angle the Air Filter with the lower edge placed inside the bottom of the recessed grill.
4. Rotate the top of the air filter to snap into place.
5. Repeat steps 2-4 for the other side and air filter.



OVEN CLEARANCES

- A. Allow at least 2" (5.1 cm) of clearance around top of oven. Proper air flow around oven cools electrical components. With restricted air flow, oven may not operate properly and life of electrical parts is reduced.
- B. There is not an installation clearance requirement for the back of the oven.
- C. Allow at least 1" (2.54 cm) of clearance around sides of oven.
- D. Install oven so oven bottom is at least 3 feet (91.5 cm) above floor.



CONTROL PANEL FEATURES

- (A) **USB Port**
 (B) **Display**
 (C) **Number Keypads**
 (D) **Start/ OK Keypad**
 (E) **Stop/ Reset Keypad**

(F) **Secondary Function Keypads**

- To activate, press and hold corresponding number keypad.
- (i) **Manual Time Entry Mode** (keypad "1")
 - (ii) **Power Level** (keypad "2")
 - (iii) **Programming Mode** (keypad "3")
 - (iv) **User Options** (number keypad "4")
 - (v) **X2 - Double Quantity Cooking** (keypad "5")
 - (vi) **Menu A/B** (keypad "6")

So...how do I use it?

Manual Time Entry Mode

Time entry mode allows the user to manually enter cook time and power level, without changing the preset program keypads.

1. Open oven door, place food in oven, and close door.
2. Press and hold number keypad "1"/ TIME ENTRY.
3. Press number keypads to enter desired cook time.
4. Press and hold number keypad "2"/ POWER LEVEL to change power level.
 - Press number keypads to enter % microwave power ("1"=10%, "2"=20%, etc.)
For 100% power level, press and hold number keypad "2"/ POWER LEVEL.
5. Press START/OK keypad to begin cooking.
6. At the end of the cooking cycle, the oven beeps. Carefully remove food from oven.

Programming Mode

1. Press and hold number keypad "3"/ PROGRAM.
2. Press number keypad(s) to open the desired program location.
3. **To edit name:** Press number keypad "0". Press number keypads to enter recipe name. Press START/OK keypad.
4. **To edit cook time for Stage One:** Press number keypad "1". Press number keypads to enter cook time. Press START/OK keypad.
5. **To edit power level for Stage One:** Press number keypad "5". Press number keypads to enter % microwave power ("1"=10%, "2"=20%, etc.). For 100% power level, press and hold number keypad "2"/ POWER LEVEL.
6. If stage cooking is desired, repeat steps 4-5 for each additional stage, substituting corresponding number keypads for each stage.
7. **To save and exit programming mode:** Press START/OK keypad.

Preset Program Keypads

To cook food using preprogrammed cooking sequences:

1. Open oven door, place food in oven, and close oven door.
2. Press desired number keypad(s).
3. Oven operates and time counts down.
4. At the end of the cooking cycle, the oven beeps. Carefully remove food from oven.

X2 - DOUBLE QUANTITY COOKING

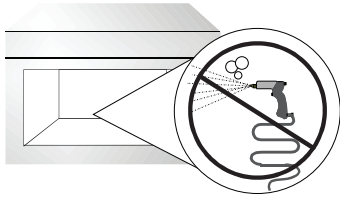
1. Press and hold number keypad "5"/ X2 to toggle double quantity feature ON. "X2" appears at top center of screen when enabled.
2. Press desired number keypad(s). Display counts down cooking time for two quantities.

MENU A/B (select models)

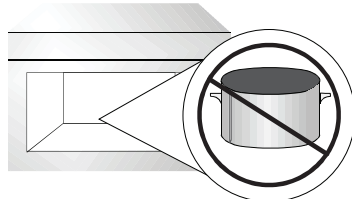
Press and hold number keypad "6" to toggle between A and B menus.

Quick Start Guide

Refer to Owner's Manual for Safety Statements. Complete Owner's Manual available online.



DO NOT power spray
DO NOT use steam cleaning



No metal pans

Refer to Owner's Manual for complete care and cleaning instructions.

⚠ Do NOT use abrasive cleaners or cleaners containing ammonia, citrus, phosphates, chlorine, sodium or potassium hydroxide (lye). Use of unapproved cleaning agents will void the terms of the warranty.

Access and Modify User Options

There are several options you can change to customize the operation of the oven for your business.

Options are shown below. **The factory setting is shown in bold type.**

1. Press and hold keypad number "4"/ USER OPTIONS.
If prompted, enter the PIN Code and press START/OK keypad
2. Press the START/OK keypad to scroll through pages of user options
3. To access an individual user option, press the corresponding number keypad
 - To change the setting, press corresponding number keypad
 - To return to User Options Menu, press START or STOP/RESET
4. Press STOP/RESET keypad to exit User Options Menu

STANDARD DEFAULT PER MODEL (FACTORY SETTINGS IN BOLD)

Factory setting may vary by model

SETTING	DISPLAYED OPTIONS	DESCRIPTION
End of Cycle Beep	3 Seconds Continuous Burst	3 second continuous beep Continuous beep until door is opened 5 beep bursts until door is open
Speaker Volume	Low Medium High	Sets volume to low Sets volume to medium Sets volume to high
Key Beep	On Off	Allows beep when keypad is pressed Prevents beep when keypad is pressed
Reset on Door Open	End Cook Cycle Pause Cook Cycle	Cancels heating time count down after door is opened during cycle. Allows oven to resume heating time countdown after door is opened during cycle
Digit Entry	Single Digit Double Digit Folders	Allows 10 (0-9) preprogrammed items Allows 100 (00-99) preprogrammed items Allows 10 folders (0-9), each with 10 preprogrammed items
Manual Programming	On Off	Allows use of manual time entry and preprogrammed keypads Allows use of preprogrammed keypads only
Time Entry	On Off	Manual time entry/cooking allowed Manual time entry/cooking not allowed
Maximum Cook Time	10 minutes 60 minutes	Allows 10 minutes of heating time Allows 60 minutes of heating time
Keypad Enable Window	15 seconds 30 seconds 1 minute 2 minutes	15 seconds after oven door is opened, keyboard disabled 30 seconds after oven door is opened, keyboard disabled 1 minute after oven door is opened, keyboard disabled 2 minutes after oven door is opened, keyboard disabled
On-the-Fly	On Off	Allows pushing additional keypads to add or change time in the middle of a cook cycle Disables pushing any additional keypads during a cook cycle
Quantity Prompt*	On Off	Prompts the user for portion quantity multiplier (1-9) upon selecting a preset program Allows user to cook individual portions and/or use X2 quantity multiplier feature
Default to Menu A or B*	Menu A Menu B	Menu A displayed by default Menu B displayed by default
PIN Code	Off On Set PIN Code	PIN Code not required to access User Options PIN Code required to access User Options PIN Code required. Create new 4 digit PIN Code
Language	Bengali, Chinese (Mandarin), Danish, Dutch, English , Filipino, French, German, Greek, Hindi, Italian, Japanese, Korean, Laotian, Norwegian, Polish, Portuguese, Romanian, Russian, Spanish, Swedish, Thai, Ukrainian, Vietnamese	
Load File	N/A	Detects USB flash drive and imports .xml format menu file

* Available on select models only (only displayed in User Options menu if factory option is enabled)

The switching operation of this microwave oven can cause voltage fluctuations on the supply line. The operation of this oven under unfavorable voltage supply conditions can have adverse effects. This device is intended for the connection to a power supply system with a maximum permissible system impedance Zmax of 0.31 Ohms at the interface point of the user's supply. The user has to ensure that this device is connected only to a power supply system which fulfills the requirement above. If necessary, the user can ask the public power supply company for the system impedance at the interface point.